



INSIDE:

- DISTRICT COMPARISONS
- COMMUNITY DEMOGRAPHICS
- STAFFING
- TAX RATES
- PER-PUPIL SPENDING
- REVENUES-EXPENSES
- ACADEMIC PERFORMANCE

Community Report

ANNUAL FACTS & FIGURES

Distributed: Fall 2019

A great place for students, families, staff, community

Superintendent's message

The Hamilton School District has a lot to celebrate. Data and hard numbers, such as what you can read in this Community Report, tell part of the story, but important things are happening in the district that you won't see in these statistics. We will always look for better results, but we also want our schools to be a great place where students, staff, families, businesses and community members want to be. Consider that:



Paul Mielke, Ph.D.
Superintendent

- We have more than 275 senior citizens who volunteer as part of the Seniors and Students Program. Our volunteers not only provide valuable help to our students and staff, but they share unique perspectives from a lifetime of experiences that enrich the lives of our students.
- The 2018 referendum allowed us to add to and renovate our applied engineering and technology labs. Input from successful businesses in the community helped us design classroom experiences that meet the demands of today's work world. Our students will have an advantage whether they go on to college, technical school, the workforce or military service.
- Families are attracted to the community because of our high-performing schools. Quality schools promote strong home values and new residents provide a bigger base to support the tax levy.

Hamilton School Board

- **Gabe Kolesari** (Sussex) – *President*
- **Jennifer Waltz** (At large) – *V. Pres.*
- **Jay Jones** (Lannon) – *Treasurer*
- **Dawn Van Aacken** (Lisbon) – *Clerk*
- **Michael Hyland** (At large)
- **Brian Schneider** (Menomonee Falls)
- **Rebecca Zingsheim** (Butler)

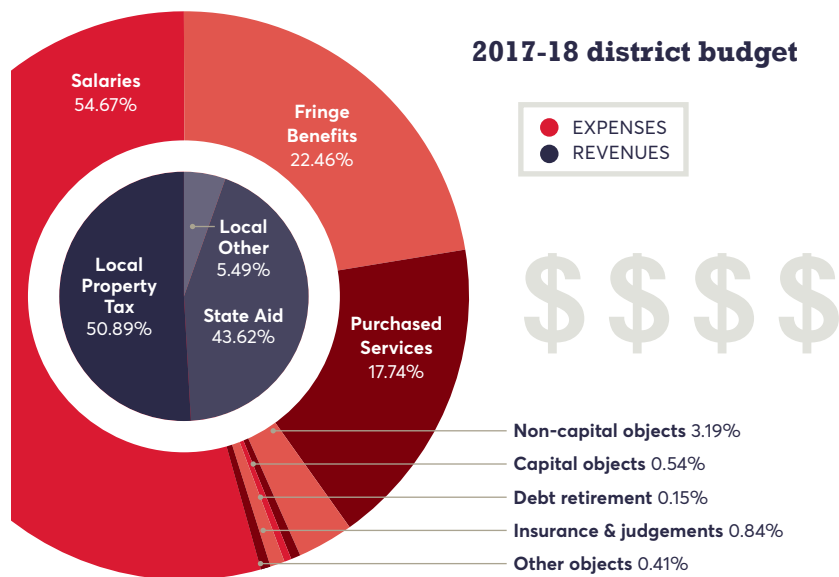
Information about the Hamilton School Board, its meetings and meeting highlights are posted on the district website at www.hamilton.k12.wi.us.

Our mission

It is the mission of the Hamilton School District, a child-centered, progressive, pro-active organization, to ensure maximum achievement for each student through a respectful and active learning environment; a rigorous, relevant curriculum; and highly qualified caring staff in concert with our diverse community.

NOTICE OF NONDISCRIMINATION: The Hamilton School District will not deny any person admission to any public school or deny any person participation in, deny any person the benefits of, or discriminate against any person in any curricular, extracurricular, pupil services, recreational or other program or activity because of a person's sex, race, color, religion, national origin, ancestry, creed, pregnancy, marital or parental status, sexual orientation, or physical, mental, emotional or learning disability, or any other reason prohibited by state or federal laws or regulations. The Hamilton School District prohibits staff, students and volunteers from discriminating against or harassing others based on the characteristics described above. The Hamilton School District is an equal opportunity employer and complies with all state and federal laws regarding non-discrimination in employment practices.

Financial facts & figures



Know your school district

Municipal apportionment of district levy

Sussex	37.42%
Menomonee Falls	33.29%
Lisbon	18.81%
Butler	4.71%
Lannon	3.88%
Pewaukee	1.88%

Personnel levels

Licensed instruction	59.82%
Aides/Support/Others	37.12%
Administration	3.06%

Highly qualified staff

Staff teaching in areas of certification	100%
Teachers with master's degree	74%

Student demographics

White	81.0%
Asian	6.4%
Hispanic	5.9%
Black	3.0%
2+ Races	3.4%
American Indian, Alaskan	0.2%
Hawaiian, Pacific Islander	0.2%

Economically disadvantaged

Disabled	11.9%
English language learner	9.5%
	1.4%

Staff-pupil ratios

	District	State
Licensed instruction	1:16	1:13
Administration	1:239	1:208
Support staff	1:29	1:23

Graduation plans

	District	State
4-year college/univ	72.5%	52.5%
Voc tech college	12.1%	21.1%
Employment, other	14.4%	23.2%
Military	1.1%	3.0%

Other statistics

	District	State
Attendance	96.2%	93.9%
Graduation	96.5%	89.6%
Truancy	2.9%	9.5%
Dropout	0.1%	1.4%
Suspension	1.8%	8.2%

Due to rounding, sums do not always equal 100.
Source: Wisconsin Department of Public Instruction School District Performance Report and WISEdash



- Non-capital objects 3.19%
- Capital objects 0.54%
- Debt retirement 0.15%
- Insurance & judgements 0.84%
- Other objects 0.41%

Total spending per pupil

DISTRICT	TOTAL \$
New Berlin	\$14,452
Menomonee Falls	\$14,189
Elmbrook	\$13,634
State K-12 average	\$13,182
Kettle Moraine	\$13,014
Waukesha	\$12,110
Pewaukee	\$12,064
Muskego-Norway	\$11,950
Oconomowoc	\$11,754
Hamilton	\$11,135
Mukwonago	\$10,967

Source: Wisconsin Policy Forum. Actual total spending for 2016-17. Total spending captures nearly all of a school district's spending including instruction, pupil staff support, operations and administration, transportation, facilities and food and community service. Listed are K-12 school districts in Waukesha County.

Comparison of area school districts' financials

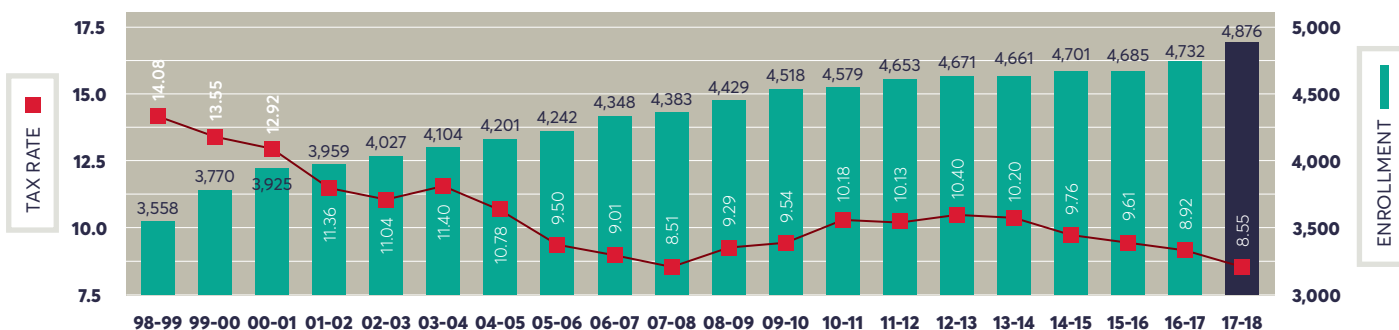
This table compares southeastern Wisconsin CESA #1 K-12 school districts in various categories. Cost per student is total actual expenses. State aid does not include categorical aid. Enrollments are full-time equivalencies, not actual number of students.

District	Enrollment	Average income	Cost per pupil	Property value per pupil	Mil rate	Pupil-teacher ratio	Local levy	State aid
Brown Deer	1,686	\$48,303	\$14,810	\$518,941	14.14	11.7	50.6%	40.7%
Cedarburg	2,945	\$90,895	\$11,860	\$772,407	9.10	15.1	41.5%	50.9%
Cudahy	2,517	\$43,374	\$13,813	\$360,330	11.49	11.4	30.8%	57.3%
Elmbrook	6,820	\$112,406	\$13,634	\$1,159,024	9.99	13.1	81.0%	9.8%
Franklin	4,198	\$77,520	\$13,333	\$659,333	11.57	15.8	56.2%	32.4%
Germantown	3,939	\$75,936	\$10,889	\$823,503	8.91	14.3	54.8%	28.4%
Grafton	2,062	\$71,183	\$13,136	\$779,985	11.27	13.4	61.5%	30.5%
Greendale	2,373	\$63,917	\$14,164	\$536,705	11.03	13.3	43.5%	41.9%
Greenfield	3,352	\$49,151	\$13,391	\$599,697	11.35	13.8	51.6%	39.2%
Hamilton	4,692	\$74,565	\$11,135	\$690,570	8.55	15.8	52.7%	39.5%
Kenosha	22,117	\$53,236	\$13,059	\$390,325	10.23	13.2	29.1%	58.6%
Kettle Moraine	3,781	\$95,451	\$13,014	\$913,319	10.08	14.5	71.8%	20.0%
Menomonee Falls	3,823	\$73,787	\$14,189	\$909,451	11.25	13.4	72.3%	14.2%
Mequon	3,530	\$162,765	\$13,916	\$1,333,177	8.07	13.8	80.4%	8.4%
Milwaukee	78,652	\$39,840	\$14,897	\$323,555	10.90	13.8	24.0%	56.6%
Mukwonago	4,663	\$73,460	\$10,967	\$682,141	8.32	15.7	49.9%	40.1%
Muskego-Norway	4,904	\$75,665	\$11,950	\$649,603	9.49	15.6	51.8%	37.8%
New Berlin	4,483	\$77,576	\$14,452	\$1,025,295	10.83	14.4	81.5%	9.6%
North Ozaukee	823	\$65,689	\$13,239	\$716,674	10.06	13.9	54.3%	34.6%
Oak Creek	6,425	\$60,468	\$11,535	\$570,188	8.66	15.2	42.9%	48.1%
Oconomowoc	5,688	\$88,345	\$11,754	\$905,067	9.62	14.4	71.5%	20.1%
Pewaukee	2,828	\$93,883	\$12,064	\$913,485	10.01	15.0	75.6%	17.7%
Port Wash/Sauk	2,634	\$57,696	\$12,708	\$594,359	10.37	13.4	46.8%	45.1%
Racine	21,247	\$51,664	\$13,495	\$420,315	10.02	11.4	29.1%	59.0%
St. Francis	829	\$47,793	\$15,029	\$656,531	12.13	13.8	59.1%	28.3%
Shorewood	1,902	\$103,381	\$15,544	\$761,943	13.88	13.1	68.6%	20.0%
South Milwaukee	3,116	\$44,703	\$13,426	\$362,086	11.38	13.7	30.1%	59.7%
Waukesha	12,942	\$67,755	\$12,110	\$713,463	8.21	13.7	49.9%	38.8%
Wauwatosa	6,189	\$79,627	\$12,117	\$894,893	7.89	13.4	64.6%	25.9%
West Allis	8,635	\$44,166	\$12,333	\$499,389	10.99	12.5	33.9%	48.2%
Whitefish Bay	2,785	\$161,445	\$11,725	\$763,489	10.35	14.1	60.0%	29.9%
Whitnall	2,096	\$63,680	\$13,511	\$774,567	10.09	12.7	57.8%	31.9%

Sources: Wisconsin Policy Forum and Wisconsin Department of Public Instruction School Financial Services Data Warehouse and School District Performance Report. Mil rate is 2017-18 data. Enrollment, cost per pupil, pupil-teacher ratio, local levy and state aid are 2016-17 data. Average income and property value per pupil is 2015-16 data.

20-year trends: Tax rates & enrollments

Tax rate is local property taxes paid per \$1,000 of equalized property value for school purposes. Enrollment is head count of all students the district is responsible for educating, not full-time equivalency.



Living our commitment to students

Hamilton School District achievements are a testament to the commitment parents, staff and community have to the children of our community. In this district, we live our motto, "Each Child, Every Opportunity for Success." Please take time to review data on one source of pride — our academic achievement.

HIGHLIGHTS: Wisconsin Forward Exam results

Hamilton School District students scored well on the 2017-18 Wisconsin Forward Exam, topping the statewide average by 21 – 29 percentage points and outperforming most Waukesha County school districts in all subjects.

Compared to the state average, Hamilton scores were:

- 29 percentage points higher in mathematics;
- 23.6 points higher in science;
- 22.9 points higher in English-language arts; and
- 21.8 points higher in social studies.

Among Waukesha County's 10 K-12 school districts, Hamilton was the top performer in science, mathematics and English-language arts. It was the second highest in social studies.

The Forward Exam is a criterion-referenced assessment in which a standard is set and scores reflect the percentage of students who achieve at that level. Four categories of proficiency are minimal, basic, proficient and advanced. The tables to the right show the percentage of students who achieved at the proficient and advanced proficient levels.

Source: 2017-18 Wisconsin Department of Public Instruction WISEdash



Waukesha County K-12 Forward Exam Comparisons

Grade 3	Grade 4	Grade 5	Grade 6	Grade 7	Grade 8	District
67.3 Hamilton	68.8 Muskego	70.0 Hamilton	68.4 New Berlin	67.9 Mukwonago	63.3 Pewaukee	65.3 Hamilton
65.9 Pewaukee	67.1 Hamilton	68.0 Muskego	68.2 Pewaukee	66.9 Pewaukee	60.6 Hamilton	64.3 Muskego
65.4 Muskego	66.8 Elmbrook	65.8 New Berlin	63.2 Muskego	64.5 Muskego	56.8 Muskego	62.0 Pewaukee
63.9 Elmbrook	64.3 Kettle Mor	65.3 Kettle Mor	62.9 Hamilton	63.8 Hamilton	54.8 Elmbrook	61.4 Elmbrook
60.0 New Berlin	59.0 Mukwonago	64.6 Elmbrook	60.3 Elmbrook	59.1 Elmbrook	54.0 New Berlin	60.4 New Berlin
57.7 Kettle Mor	57.7 Oconom	58.7 Mukwonago	58.6 Kettle Mor	58.8 Kettle Mor	47.2 Men Falls	57.3 Mukwonago
57.2 Mukwonago	57.5 New Berlin	54.6 Pewaukee	58.0 Mukwonago	58.1 New Berlin	43.2 Mukwonago	57.2 Kettle Mor
49.1 Oconom	53.1 Pewaukee	48.8 Oconom	48.5 Men Falls	57.4 Men Falls	39.2 Kettle Mor	47.4 Men Falls
42.4 State	46.8 Waukesha	48.8 Waukesha	46.4 Oconom	44.9 State	38.2 Oconom	46.9 Oconom
40.3 Men Falls	45.8 Men Falls	45.6 Men Falls	43.2 State	42.6 Oconom	37.0 State	42.4 State
37.9 Waukesha	44.4 State	44.6 State	38.7 Waukesha	39.2 Waukesha	33.8 Waukesha	40.7 Waukesha

ENGLISH-LANGUAGE ARTS

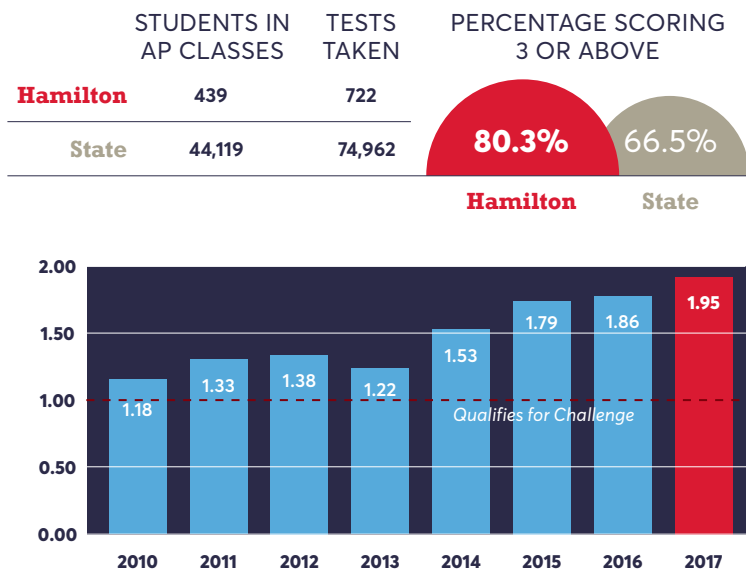
Grade 3	Grade 4	Grade 5	Grade 6	Grade 7	Grade 8	District
81.1 Muskego	81.0 Hamilton	82.1 Muskego	79.3 Muskego	65.3 Kettle Mor	66.8 New Berlin	72.8 Hamilton
79.2 Elmbrook	77.5 Elmbrook	80.2 Hamilton	74.1 New Berlin	63.8 Elmbrook	66.4 Hamilton	72.8 Muskego
78.1 Hamilton	76.2 Mukwonago	75.4 New Berlin	73.1 Mukwonago	63.7 Hamilton	65.4 Muskego	69.5 New Berlin
74.4 New Berlin	73.4 Oconom	74.4 Mukwonago	71.4 Kettle Mor	62.6 Muskego	60.8 Elmbrook	68.9 Elmbrook
72.2 Pewaukee	70.0 Men Falls	69.2 Elmbrook	67.5 Hamilton	61.6 Men Falls	59.8 Pewaukee	66.9 Mukwonago
70.7 Oconom	68.9 Muskego	67.1 Kettle Mor	66.6 Pewaukee	61.3 New Berlin	57.2 Kettle Mor	65.2 Kettle Mor
70.6 Mukwonago	66.3 New Berlin	63.8 Men Falls	63.7 Elmbrook	61.0 Mukwonago	48.3 Mukwonago	60.8 Pewaukee
70.2 Kettle Mor	60.9 Kettle Mor	58.3 Oconom	57.6 Oconom	59.5 Pewaukee	47.3 Oconom	59.5 Oconom
66.4 Men Falls	58.0 Pewaukee	54.1 Waukesha	56.2 Men Falls	52.6 Oconom	38.3 Men Falls	58.8 Men Falls
52.0 Waukesha	49.3 Waukesha	49.5 Pewaukee	44.5 State	39.2 State	38.0 Waukesha	44.2 Waukesha
50.5 State	45.3 State	46.7 State	39.2 Waukesha	33.6 Waukesha	36.6 State	43.8 State

MATHEMATICS

AP Exam pass rates

The College Board offers Advanced Placement testing to high school students. The University of Wisconsin System and other universities recognize credits earned in AP courses. The graph shows Hamilton's **Challenge Index** – the number of AP exams given divided by seniors who graduate. Scores of 1.0 or higher make the Washington Post (previously Newsweek) top high school ranking.

Source: 2017-18 Wisconsin Department of Public Instruction WISEdash



Wisconsin School Report Card

Performance among highest in state

Hamilton School District's 2017-18 performance on the Wisconsin School Report Card was highest in Waukesha County and among the highest in Wisconsin.

State comparisons

Hamilton was the third highest among Wisconsin's 367 K-12 school districts and was one of only 29 districts to earn the top designation of "significantly exceeds" expectations for performance.

Hamilton also had the:

- highest student achievement score;
- second highest mathematics score; and
- third highest reading and language arts results.

Hamilton's district rankings increased in every category over the previous year. Hamilton's state rank increased from sixth place to third place. Its achievement score went from third to first, mathematics went from fourth to second, and reading and language arts went from fourth to third place statewide.

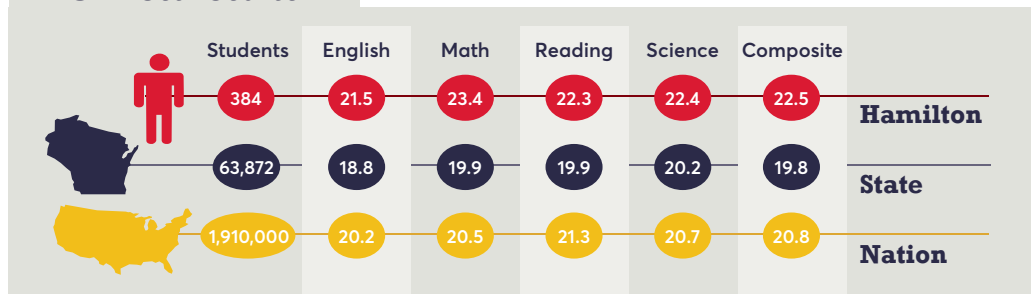
Waukesha County comparisons

Among Waukesha County K-12 school districts, Hamilton was the highest-rated school district and was first for overall accountability, overall student achievement, mathematics and reading-language arts achievement.

See tables below for Hamilton's standing among Waukesha County K-12 schools.
Source: 2017-18 Wisconsin Department of Public Instruction WISEdash.



ACT Test results



Source: ACT National Profile Report 2018



Hamilton tops Waukesha County K-12 school districts

Each Wisconsin public school district and school has a School Report Card that lets people know how well it is preparing students. One of five categories is assigned to each district and school based on state assessments: significantly exceeds expectations (83-100); exceeds expectations (73-82.9); meets expectations (63-72.9); meets few expectations (53-62.9); and fails to meet expectations (52.9 and below).

ELEMENTARY SCHOOLS							
School	Overall score	Overall rating	Achvmnt score	Reading	Math	Enrollment	
Summit	95	<i>Significantly Exceeds Expectations</i>	92.5	44.1	48.4	465	
Tess Corners	94.8		93.1	44.4	48.7	517	
Marcy	94.3		99.1	49.1	50	611	
Mill Valley	93.6		95	46.6	48.4	373	
Tonawanda	92.4		97.1	47.2	49.9	390	
Magee	92.2		98.6	48.6	50	249	
Brookfield	92.2		94.2	44.2	50	562	
Eagleville Charter	91.7		93.2	44	49.2	96	
Rose Glen	91.3		88.5	41.2	47.3	534	
Merton Primary	91.2		98.1	48.1	50	432	
Woodside	90.5		94.9	45.4	49.5	672	
KM Explore	90.4		94.8	46.6	48.2	138	
Country Meadows	89		89.8	44.7	45.1	281	
Burleigh	88.9		91.2	41.9	49.3	786	
Banting	88.3		65.8	32.9	32.9	473	
Elmwood	88.1		94.3	44.9	49.4	565	
Clarendon Avenue	88.1		90.1	42.8	47.3	517	
Meadowbrook	87.9		86.1	42.6	43.5	303	
Lannon	87.8		94.9	45.2	49.7	337	
Swanson	87.8		92.2	43	49.2	780	
Lowell	87.7		73.9	33.8	40.1	269	
Ronald Reagan	87.7		91.2	44.7	46.5	616	
Hillcrest	87.5		83.7	39.6	44.1	331	
Cushing	86.9		94.3	45.4	48.9	432	
Maple Avenue	86.9		95.7	46.1	49.6	444	
Orchard Lane	86.6		91	44.1	46.9	476	
Ixonia	86.1		72.8	32.1	40.7	256	
Park Lawn	85.9		76.6	36.6	40	431	
Section	85.7		91.9	43.3	48.6	465	
Muskego	85.1		94.7	48.8	45.9	274	
Greenland	84.9	86.9	40.7	46.2	396		
Dixon	83.5	92	42.1	49.9	525		
Blair	83.4	46.8	23.8	23	312		
Pewaukee Lake	82.3	<i>Exceeds Expectations</i>	90.7	45.1	45.6	1,011	
Wauk STEM Acad	82.1		80.4	36.1	44.3	784	
Prairie View	81.6		89.7	41.3	48.4	343	
Valley View	80.3		82	35.2	46.8	369	
Big Bend	80.3		80.4	37.7	42.7	423	
Meadow View	80.2		75	32.9	42.1	481	
Poplar Creek	80.2		83.2	39.3	43.9	450	
Rolling Hills	80.2		87.6	40	47.6	490	
Horizon School	80		82.2	41.3	40.9	636	
Heyer	79.9		56.1	26.9	29.2	406	
Dousman	76.2		80.3	39.5	40.8	416	
Riverside	75.9		77.9	34.8	43.1	450	
Summit View	75.2		78	36.8	41.2	592	
Hadfield	73.5		54.9	26.8	28.1	311	
Prairie	68.8		<i>Meets Expectations</i>	67.2	29.3	37.9	300
Hawthorne	67.1			45	22.2	22.8	239
Lakeview	66.9			78.4	37	41.4	382
Bethesda	64.9			68.9	34.5	34.4	519
Wales	64.2	78.4		38.1	40.3	355	
Whittier	62.3	<i>Meets Few Expectations</i>		45.6	23.2	22.4	209
eAchieve Acad	54.9		43.6	24.8	18.8	73	

SCHOOL DISTRICTS						
District	Overall score	Overall rating	Achvmnt score	Reading	Math	Enrollment
Hamilton	89.3	<i>Significantly Exceeds Expectations</i>	92.2	45.6	46.6	4,881
Elmbrook	88.4		89.5	43.3	46.2	7,239
New Berlin	85.7		86.6	41.9	44.7	4,390
Muskego-Norway	84.3		86	42.2	43.8	4,894
Mukwonago	83.1		83.2	40.5	42.7	4,938
Pewaukee	82.2	<i>Exceeds Expectations</i>	82.3	41.9	40.4	2,987
Kettle Moraine	81.9		84.6	41.7	42.9	3,898
Menomonee Falls	81.2		78.6	38.6	40	3,992
Oconomowoc	79.2		74.7	36.2	38.5	5,304
Waukesha	70.1	<i>Meets Expectations</i>	63.9	31.9	32	12,108

MIDDLE SCHOOLS						
School	Overall score	Overall rating	Achvmnt score	Reading	Math	Enrollment
Lake Denoon	90.9	<i>Significantly Exceeds Expectations</i>	89.4	43	46.4	731
Templeton	86.1		88.6	46	42.6	1,067
Pilgrim Park	86.1		89.2	44.2	45	824
Bay Lane	83.6	83.7	42.2	41.5	705	
Asa Clark	80.9	<i>Exceeds Expectations</i>	79.3	41.6	37.7	437
Silver Lake	79.3		75.1	37.9	37.2	695
Kettle Moraine	78.1		82.3	40.4	41.9	823
Wisconsin Hills	77.8		81.9	41.1	40.8	840
North	76.1		74.8	39.4	35.4	892
Nature Hill	72.6	<i>Meets Expectations</i>	71.5	34.7	36.8	871
Park View	71.9		77	40.3	36.7	754
Butler	71.4		62.4	32.8	29.6	883
Les Paul	69.7		65.6	34.4	31.2	707
Horning	58.3	<i>Meets Few Expectations</i>	44.9	24.2	20.7	737

HIGH SCHOOLS							
School	Overall score	Overall rating	Achvmnt score	Reading	Math	Enrollment	
Waukesha Eng Prep Acad	93.2	<i>Significantly Exceeds Expectations</i>	91.5	43.3	48.2	185	
Brookfield Centrl	93.2		92.8	47.2	45.6	1,254	
KM HS of Health Sciences	92.6		91.8	48.7	43.1	166	
Brookfield East	89		88.5	43.5	45	1,256	
Eisenhower	86.1		89.3	43.4	45.9	1,164	
Menomonee Falls	85.6		82	42.4	39.6	1,297	
Kettle Moraine	85.2		80	40.2	39.8	971	
Waukesha West	84.7		73.2	38.3	34.9	1,172	
Arrowhead	82.8		<i>Exceeds Expectations</i>	86.5	40.8	45.7	2,174
Mukwonago	81.8			76.9	38	38.9	1,630
KM School for Arts & Perform	81	76.6		45.7	30.9	150	
Hamilton	79.8	83.3		40.9	42.4	1,492	
New Berlin	78	75.5		37.3	38.2	1,119	
Pewaukee	77.3	80.3	41.4	38.9	903		
Muskego	71.1	<i>Meets Expectations</i>	76.1	38	38.1	1,631	
Oconomowoc	70.4		67.3	33.9	33.4	1,709	
Waukesha North	66.8		54.9	28.7	26.2	1,175	
Waukesha Acad of Health Profes	65.1		56.4	29.5	26.9	145	
Waukesha South eAchieve Acad	58.5		<i>Meets Few Expectations</i>	44.9	23.5	21.4	946
eAchieve Acad	54.5			55.4	33.1	22.3	632