



Hamilton Fine Arts Center Lighting Inventory and Information

Lighting designers, light board operators, riggers and stage crew are the responsibility of the user. Crew must carry liability insurance, have previous stage experience, and be familiar with the lighting console and equipment. If you do not have the appropriate tech crew, the HFAC is able to provide the appropriate crew for an additional fee. Gaffers tape, spike tape, show specific gels, gobos and rigging hardware are not supplied.

Gaffer tape and spike tape are the only type of tape allowed in the HFAC. These tapes use an adhesive that does not leave a residue and cleans up quickly. Gaffer tape and spike tape are available for purchase at cost.

Current lighting Inventory (all light fixtures utilize stage pin connectors):

Lighting Console is an **ETC Expression 3**. The console is located at the front of house position. FOH is located 61' from the stage, and is centered in the theatre. There is no overhead balcony.

Power service is (2) 100 amp, 3-phase disconnects, located upstage right and left (see stage diagram on next page).

6	Source Four 10* (575w)
10	Source Four 19* (575w)
12	Source Four 26* (575w)
16	Source Four 36* (575w)
18	Source Four Pars (575w)
12	Chauvet Colorado Tour Batten 72 LED
12	Altman Q-Light (1000w Worklight)
22	F336 RGB 3-in-1 LED Pars 25* (3 Watt)
6	ETC Source 4 Parnels
1	Follow Spot Lycian 1275 Super Star 1.2K

House Lighting Quick Sheet

House Position

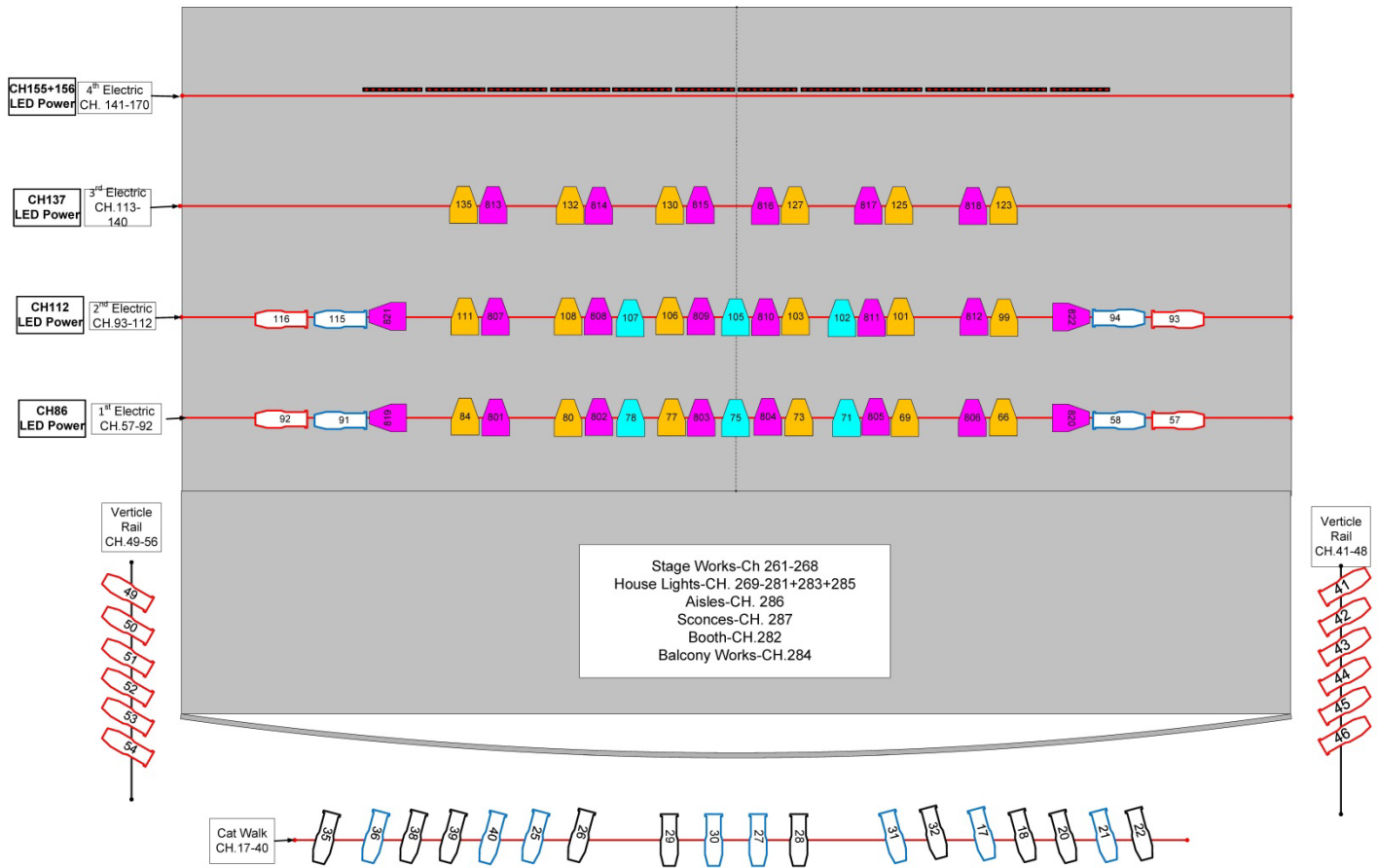
Balcony Lekos
 Catwalk
 House Left Wall Lekos
 House Right Wall Lekos
 1st Electric
 2nd Electric
 3rd Electric
 4th Electric
 Booth
 Balcony Works
 Stage Works
 House Lights
 House Right Sconce Wall
 House Front, Center
 Board Lights
 Staircase
 Orchestra
 House Lights Stage Thrust
 Aisles
 Sconces

Channels

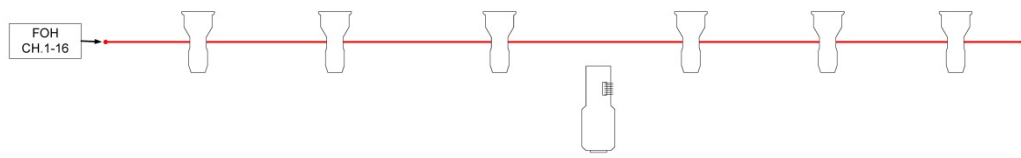
1 through 16
 17-40
 49-56
 41-48
 57-92
 93-112
 113-140
 141-170
 282
 284
 261-268
 269-281, 283, 285
 271
 276
 279
 281
 292
 292-294
 286
 287

House Plot

The house plot below must be restored prior to your departure. A \$150 fee will apply if the plot must be restored by Hamilton Fine Arts Center staff.



	Qty 18-S4 Par WFL (VN,N,Med Lenses Available)		Qty 12-26 deg. leko
	Qty 6-S4 Panel		Qty 16-36 deg. leko
	Qty 22-LED Par / RGB 3watt 25deg (6ch Mode)		Qty 10-19 deg. leko
	Qty 12-Colorado Tour Batten 72 (Mode ARC2+S—7ch)		Qty 6-10 deg. leko
			Qty 1—Lycian 1275 Super Star 1.2k Follow Spot



DMX
Dimming U1@ 1-300
LED Pars 6ch Mode

	ALL LED's in Universe 2			
1-Intensity	801-441	807-477	813-380	819-416
2-Red	802-447	808-483	814-386	820-422
3-Green	803-453	809-489	815-398	821-428
4-Blue	804-459	810-495	816-398	822-434
5-Strobe	805-465	811-501	817-404	
6-Macros	806-471	812-507	818-410	

Chauvet Colorado Tour Batten 72 Mode ARC2+S (7CH)
U2@373 (All fixtures are addressed the same)

ETC Console channels
421=Intensity
422=Red
423=Green
424=Blue
425=White
426=Amber
427=Strobe